

## **Redlion G3 to FX2N via 485BD Comms Board**

Communication Format Computer Link Melsec Protocol 4

See G303 and FX2N Example Programs

FX2N Example written in GX Developer FX

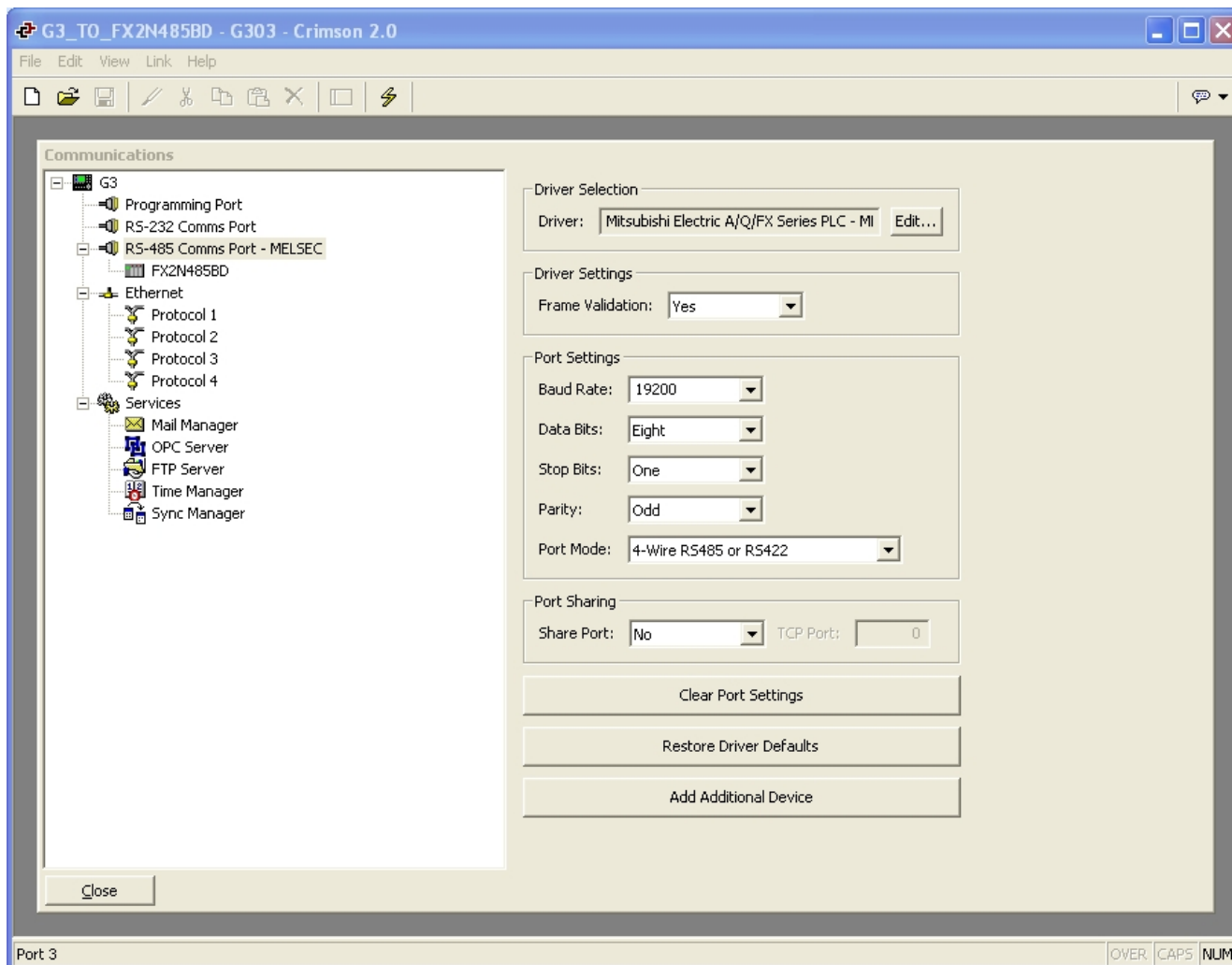
G303 Display Used, CommsError tag used for testing purposes

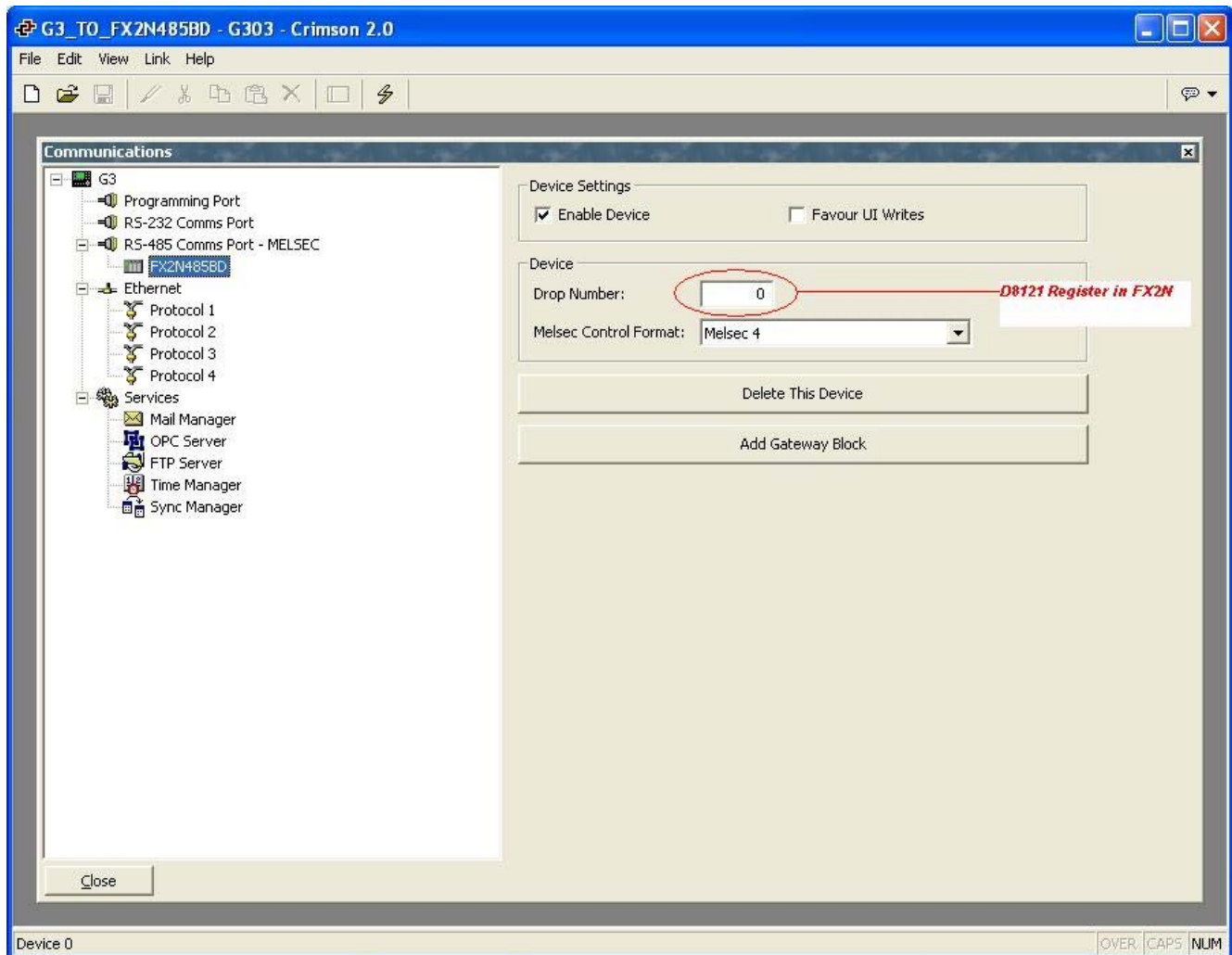
Cable Pinouts Below (No resistors used for Point to Point Example)

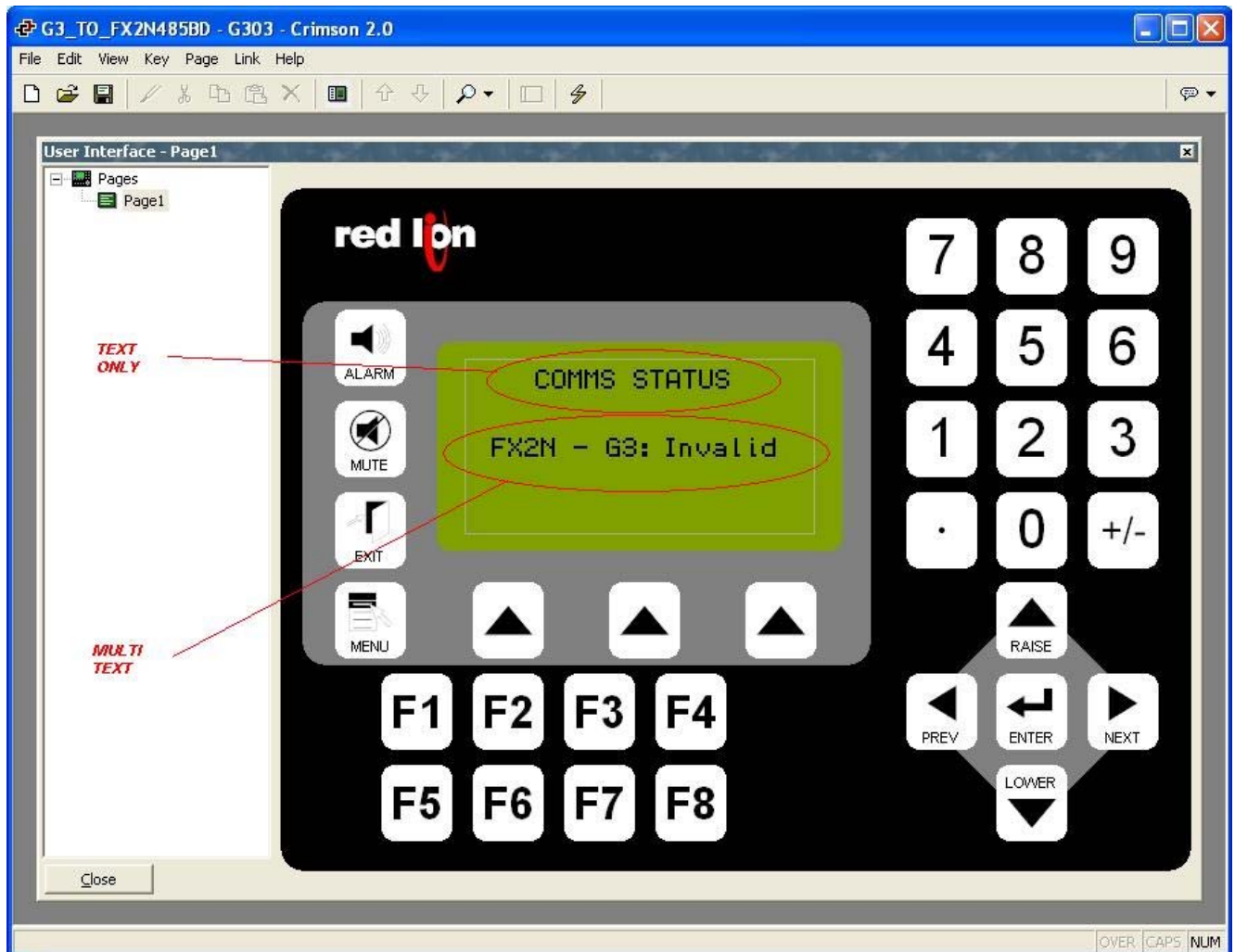
**Communication Cable, G3 / Modular Controller / Data Station Plus to FX2N-485-BD**

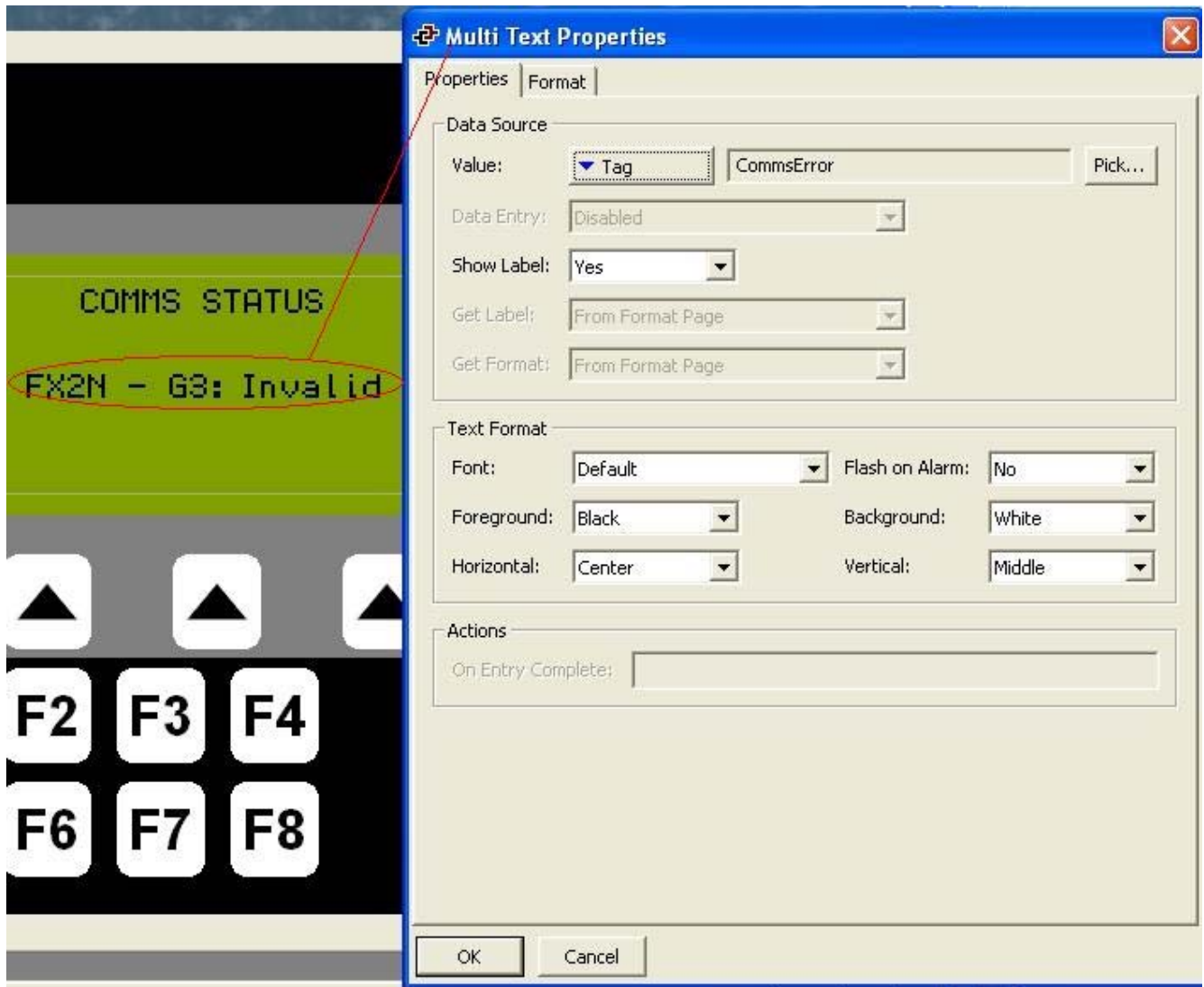
<b>RS485 Port</b>	<b>FX2N-485-BD</b>
Pin 1 (TxB)	RDA
Pin 2 (TxA)	RDB
Pin 3 ( RxA)	SDB
Pin 4 ( RxB)	SDA
Pin 6 ( Comm)	SG













### Multi Text Properties

Properties | Format

Data Label

Label Text:  [Translate...](#)

Item States

	Data	Text	
Default:		<input type="text" value="Invalid"/> <a href="#">Translate...</a>	
State 0	<input type="text" value="0"/>	<input type="text" value="GOOD"/> <a href="#">Translate...</a>	
State 1	<input type="text" value="1"/>	<input type="text" value="FAILED"/> <a href="#">Translate...</a>	
State 2	<input type="text" value="2"/>	<input type="text" value="Not Used"/> <a href="#">Translate...</a>	
State 3	<input type="text" value="3"/>	<input type="text" value="Not Used"/> <a href="#">Translate...</a>	
State 4	<input type="text" value="4"/>	<input type="text" value="Not Used"/> <a href="#">Translate...</a>	
State 5	<input type="text" value="5"/>	<input type="text" value="Not Used"/> <a href="#">Translate...</a>	
State 6	<input type="text" value="6"/>	<input type="text" value="Not Used"/> <a href="#">Translate...</a>	
State 7	<input type="text" value="7"/>	<input type="text" value="Not Used"/> <a href="#">Translate...</a>	

Navigation:

Management

[Import from File...](#) [Export to File...](#) [Copy from Tag...](#)

[OK](#) [Cancel](#)